



GMT MONTHLY MEMBERSHIP PROGRESS REPORT

Results as of: 7/31/2019

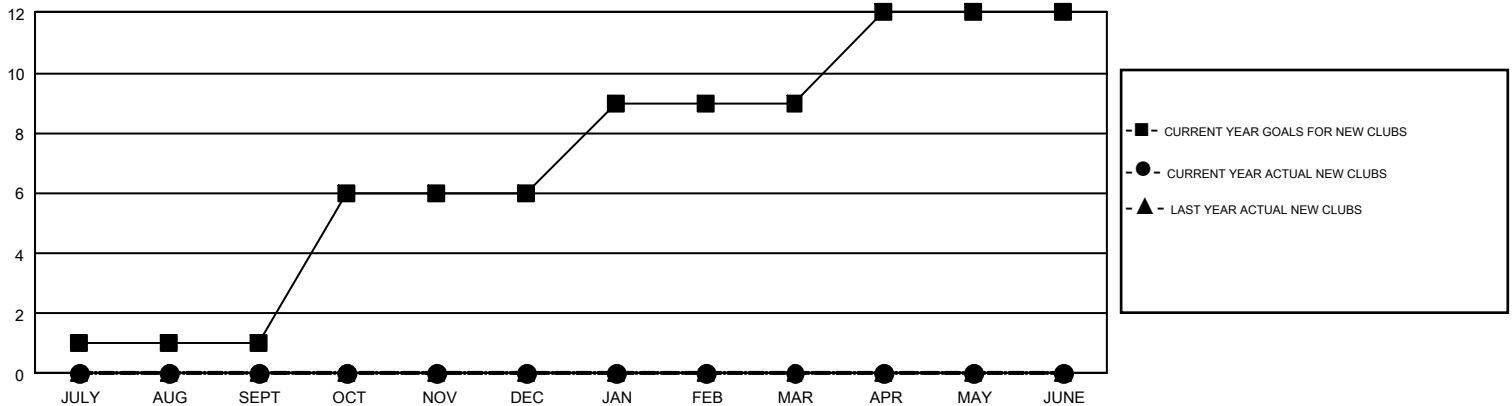
GMT Constitutional Area 5 - J, Group I

GMT: OPEN

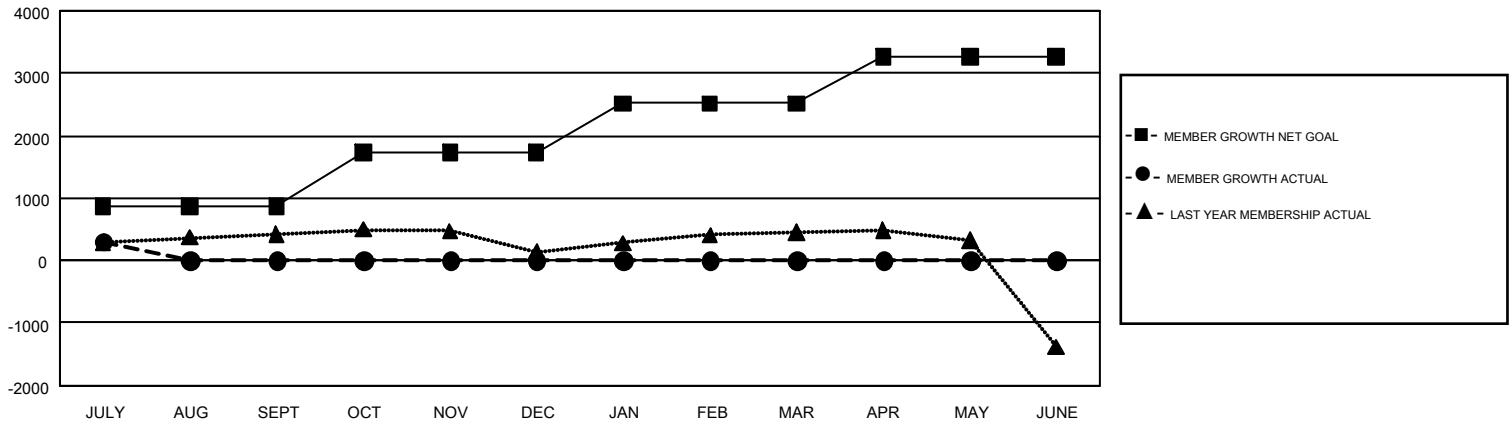
REPORT DOES NOT INCLUDE CLUBS IN UNDISTRICTED AREAS.

Clubs				Members			
RESULTS FOR 2019-2020				RESULTS FOR 2019-2020			
QUARTER	NEW CLUB GOAL	NEW CLUBS	DROPPED CLUBS	QUARTER	MEMBER GROWTH NET GOAL	MEMBER GROWTH ACTUAL	DROPPED MEMBERS ACTUAL (including transfers)
JULY/AUG/SEPT	1	0	1	JULY/AUG/SEPT	865	650	313
OCT/NOV/DEC	5	0	0	OCT/NOV/DEC	866	0	0
JAN/FEB/MAR	3	0	0	JAN/FEB/MAR	786	0	0
APR/MAY/JUNE	3	0	0	APR/MAY/JUNE	755	0	0

GOALS AND ACTUAL NEW CLUBS CUMULATIVE



GOALS AND ACTUAL MEMBERS CUMULATIVE



DROPPED CLUBS: 1	323 CLUBS OF 815 ADDED 1 OR MORE NEW MEMBERS	GENDER DISTRIBUTION MALE 26,291 (73.69%) FEMALE 9,386 (26.31%)
DROPPED MEMBERS DECEASED 22 CLUB CANCELLED 3 OTHER 288 <hr/> TOTAL 313	CLICK HERE FOR CUMULATIVE MEMBERSHIP DATA	TOTAL FAMILY UNIT MEMBERS 15,631 FAMILY MEMBERS PAYING HALF DUES 8,373